

ANALYSIS OF THE PV SYSTEM OPERATION USING THE system efficiency factor – η_{SF}

Ilija RADOVANOVIĆ

School of Electrical Engineering - University of Belgrade, Innovation center of School of Electrical Engineering in Belgrade, Serbia

Ivan POPOVIĆ

School of Electrical Engineering - University of Belgrade



OUTLINE

- Introduction
- System efficiency factor
- Performance assessment
- Conclusion



INTRODUCTION

- Performance assessment of PV systems
- The solar PV modules in urban area are often exposed to different sources of performance degradation
- Connection faults, mechanical defects, aging, manufacturing tolerances, shading, soiling effects, atmospheric conditions
- Long-term outdoor operating conditions (delamination, discoloration and corrosion)



SYSTEM EFFICIENCY FACTOR

- Identifying the fault operation of PV system
- It enables the compensation of different mid-term and long-term degrading effects
- Empirically compensate time-varying operational and physical system properties related to the system-to-system comparison under the clear sky conditions



SYSTEM EFFICIENCY FACTOR

- Ratio of the estimated total horizontal irradiance G_M under the detected clear sky conditions and the reference irradiance value G_0

$$\eta_{SF} = G_M / G_0$$

- Influences would be compensated by choosing the relevant **observation period** as a sliding window for correct determination of the system efficiency factor value

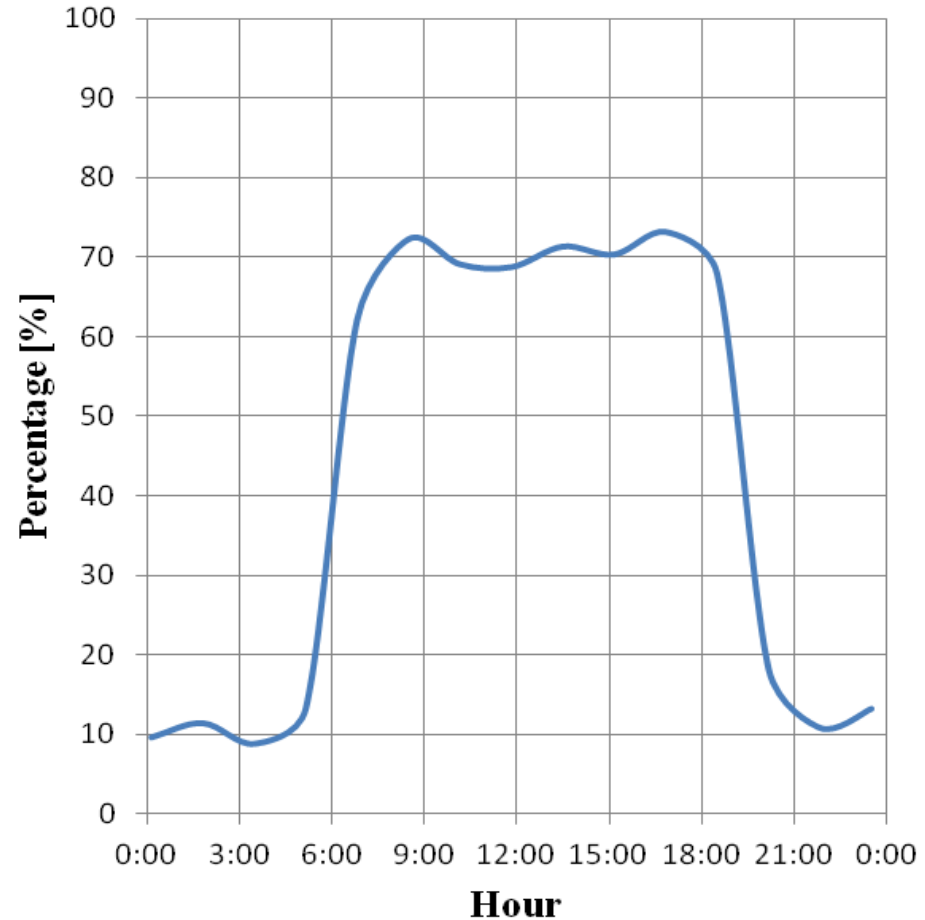
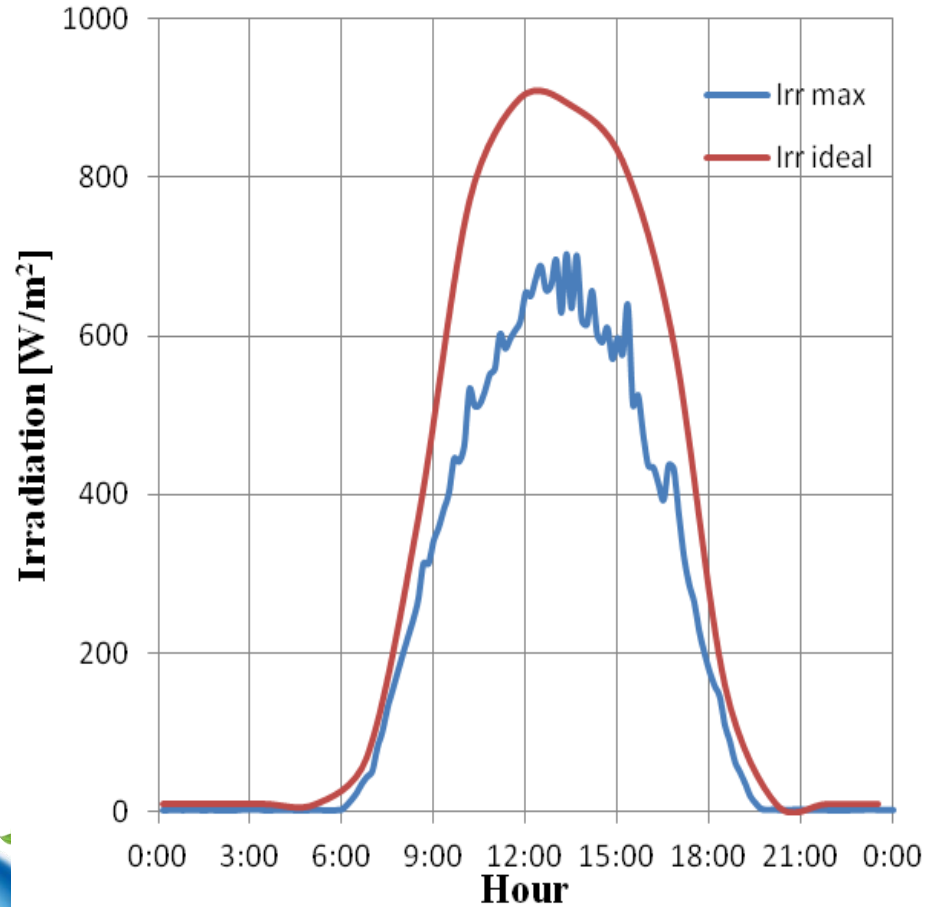


PERFORMANCE ASSESSMENT

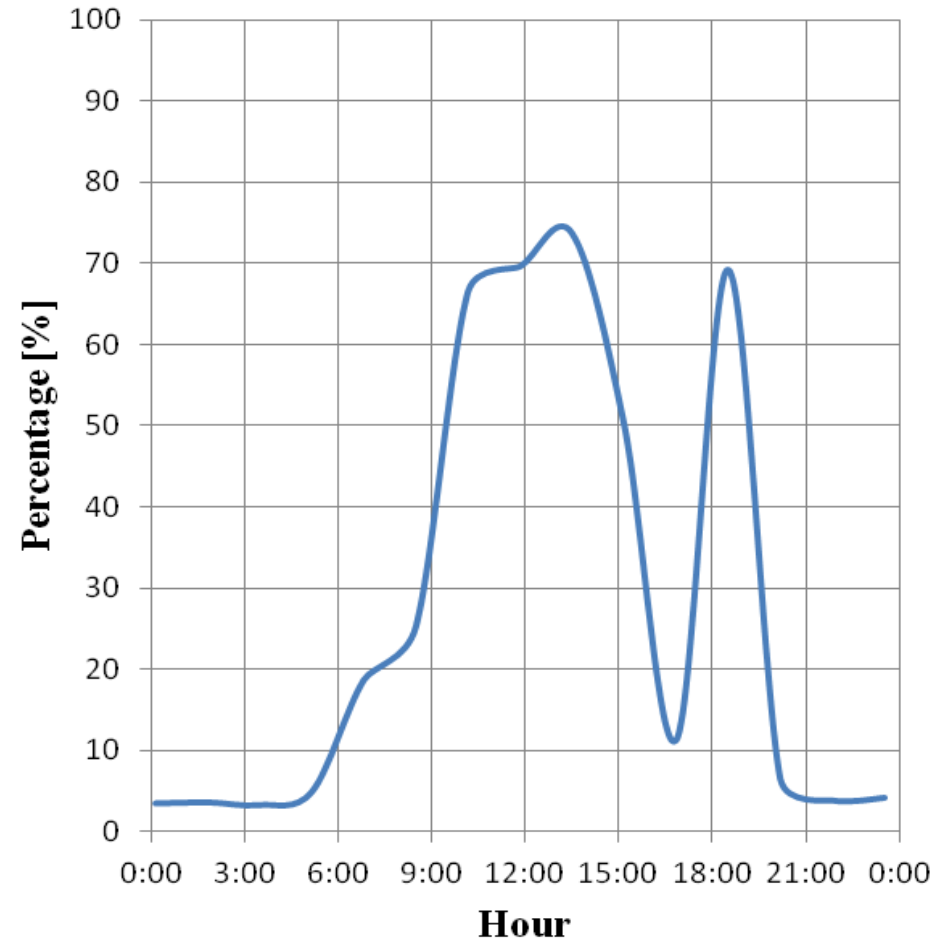
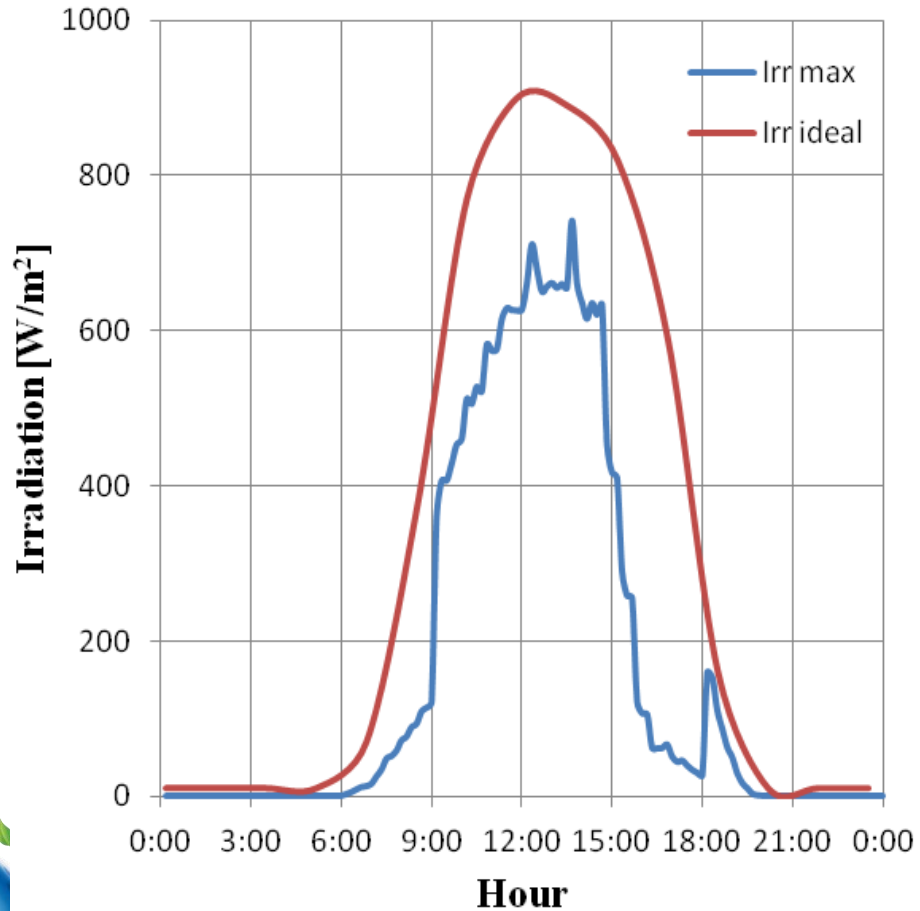
- Daily profile of the total horizontal irradiance found from the measured averaged estimates G_M (blue curve) and clear-sky model G_0 (red curve)
- The measurement station is based at the park surrounding in the city of Belgrade
- 10-minutes averaged estimated values



PERFORMANCE ASSESSMENT



PERFORMANCE ASSESSMENT



CONCLUSION

- Different mid-term and long-term degrading effects, including manufacturing tolerances and measurement imperfections are compensated by the introduction of the system efficiency factor
- Enables the detection of various PV system operating conditions caused by physical failures, shading operation, aging processes
- Establishes the flexible framework for future work in the field of performance assessment of PV systems in urban surroundings



**Thank you for
your attention!!!**

